

Manufacturer Wholesale [Industrial Paint Drying Equipment](#) Infrared IR Halogen Heater for Infrared Drying Oven

Application :

Space heater , Home heater , PTC Heater , Winter heater , Warm [Infrared Heaters for Paint Booth](#)

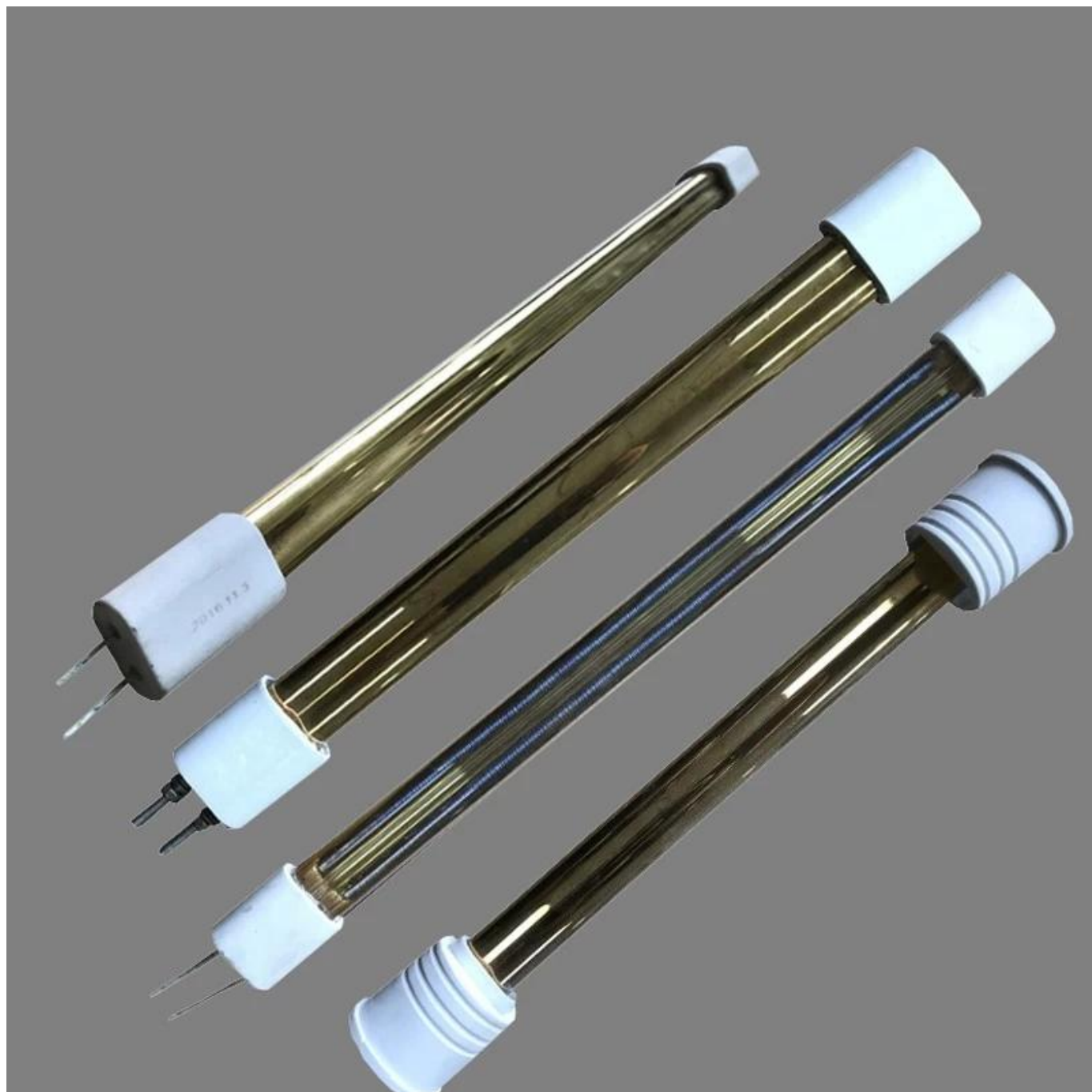






Specification:

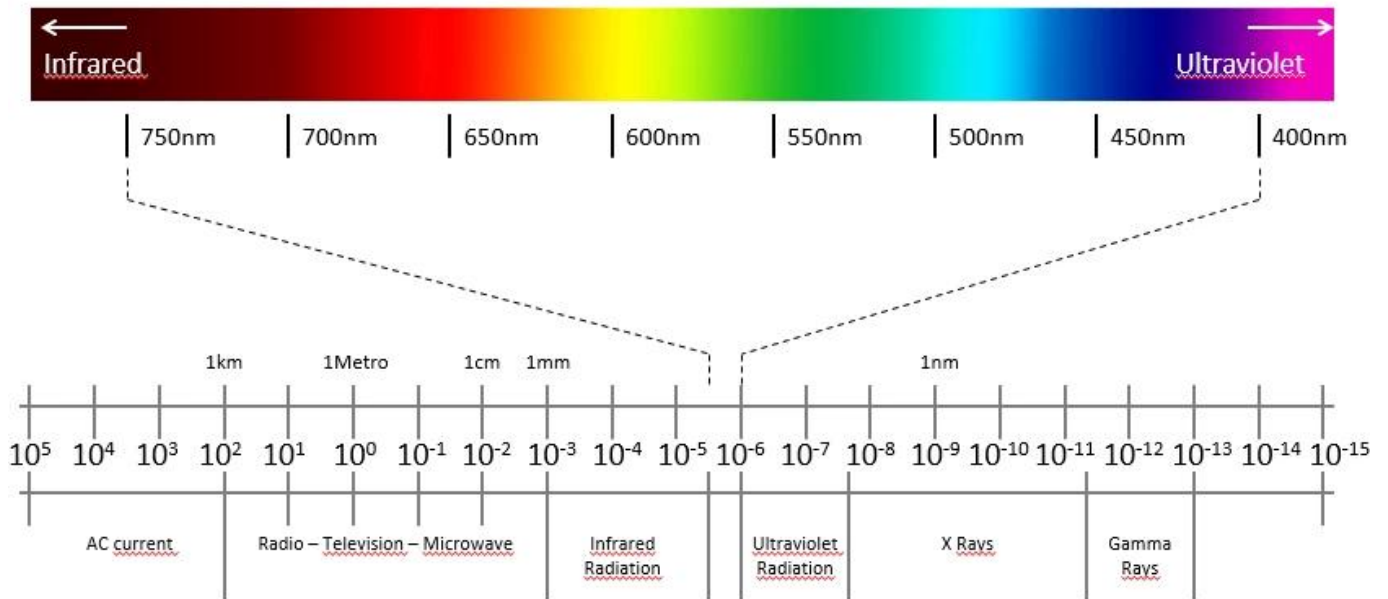
Item Type	2500w Infrared Lamps for SM52 series
Warranty(Year)	5000H
Lighting solutions service	heidelberg offset printing product ir dryer lamp
Working Time (hours)	5000hours
Light Source	Halogen Bulbs
Input Voltage(V)	415V
Working Lifetime(Hour)	10000



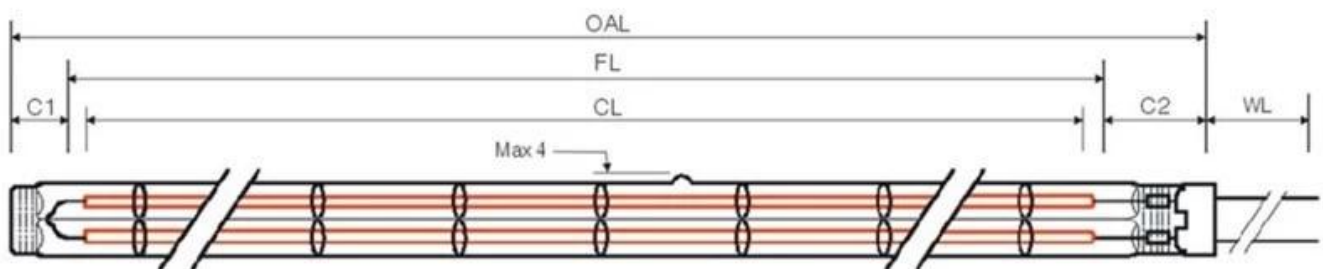




Visible light spectrum



2. Dimensions Drawing:



OAL: 740MM
 FL: 690 MM
 CL: 635 MM
 C1: 25MM
 C2: 40MM
 WL: 1000MM

Ceramic Head Drawing:
 A*B: 23*11mm



Shenzhen Newplanet Technology Co.,Ltd
(Shenzhen Suknun Technology Co.,ltd)
0086-755-8939 9684(Direct) Fax: 0086-755-28995058
Email: irlightsales02@hotmail.com

Machine	Lamp Code	HD part	IR wave	Watt	OL(mm)	Volt (V)	Channel1 (W)	Channel 2 (W)	Head	Line 1	Line 2	Lamp Style	Use condition	Machine Details
SM52	SM52-SW-A	G4. 170. 0101	Short	3300	712/740	415	1650	1650	23*11	300	300	B	Horizontal	Grafix Heidelberg SM52
Heidelberg M	HMO-SW-A	53. 170. 1311	Short	3300	740	415	1650	1650	23*11	500	500	B	Horizontal	Grafix Heidelberg M0
	HMO-MW-B	53. 170. 1411	Medium	1800	740	415	900	900	33*15	500	500	B	Horizontal	Grafix Heidelberg M0
	SM72-SW-A	83. 170. 1311	Short	3500	800	415	1750	1750	33*15	500	500	B	Horizontal	Grafix Heidelberg 72
SM72	SM72-SW-B	83. 170. 1411	Medium	1900	800	415	950	950	33*15	500	500	B	Horizontal	Grafix Heidelberg 72
SM102-Pre9	SM102-SW-A	91. 170. 1311	Short	3500	1100	415	3500	0	23*11	500	500	A	Horizontal	Heidelberg SM102(Pre1997) Grafix part: 2130012
	SM102-MW-B	91. 170. 1411	Medium	2500	1100	415	1250	1250	33*15	1000	1000	B	Horizontal	Heidelberg SM102(Pre1997) Grafix part: 2130011
	SM74-SW-C	M6. 170. 0301	Short	6950	900	400	2800	2075*2	23*11	100	100	H	Horizontal	Drystar-Heidelberg SM74/CD74(Post1997)
CD74	SM74-FMW-B		Fast-Medium	4200	820	480	2100	2100	33*15	500	500	B	Horizontal	Grafix Heidelberg SM74 POST 1997
MAN500	MANGX-FMW-B		Fast-Medium	4200	820	415	2100	2100	33*15	500	500	B	Horizontal	Grafix SHS Man Roland 500
CD102	SM102-SW-C	C7. 170. 0301	Short	5400	1200	400	3500	950*2	23*11	100	100	H	Horizontal	Drystar
	SM102-FMW-B		Fast-Medium	6000	1120	480	3000	3000	33*15	1000	1000	B	Horizontal	Grafix SHS Heidelberg 102 POST 1997
	SM105XL	F7. 170. 0771	Fast-Medium	6200	1160	400	3100	3100	33*15	500	500	B	Horizontal	Drystar 3000 Heidelberg SM102/CD102/SM102)Post2004)
907381	907381	C7. 170. 0716	Short	5400	1160	400	5400	0	33*15	130	130	A	Horizontal	907381
XL75	XL75	L7. 170. 0301	Short	3500	900	400	1750	1750	23*11	500	500	B	Horizontal	XL75

Twin Lamp Structure:

