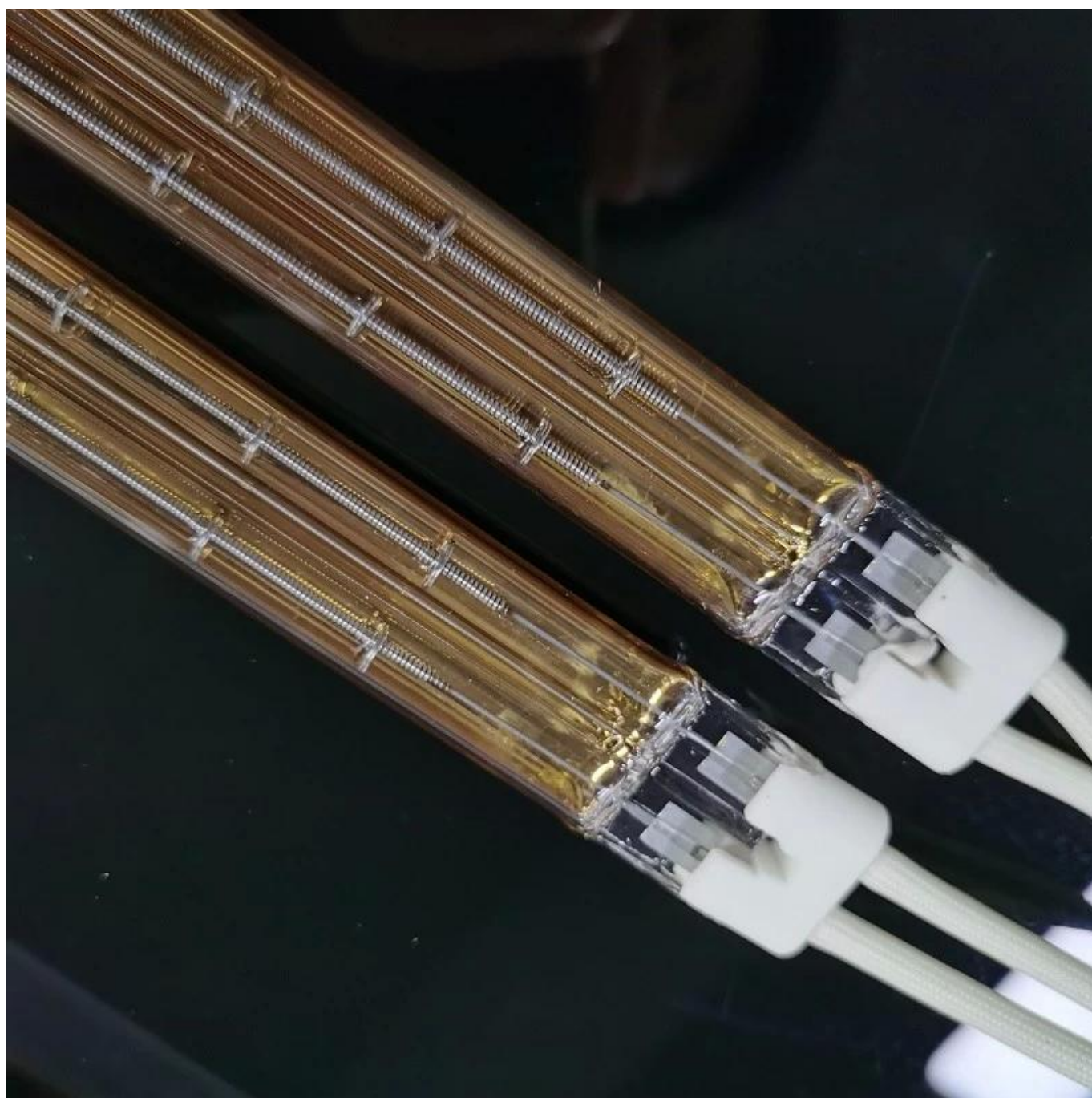


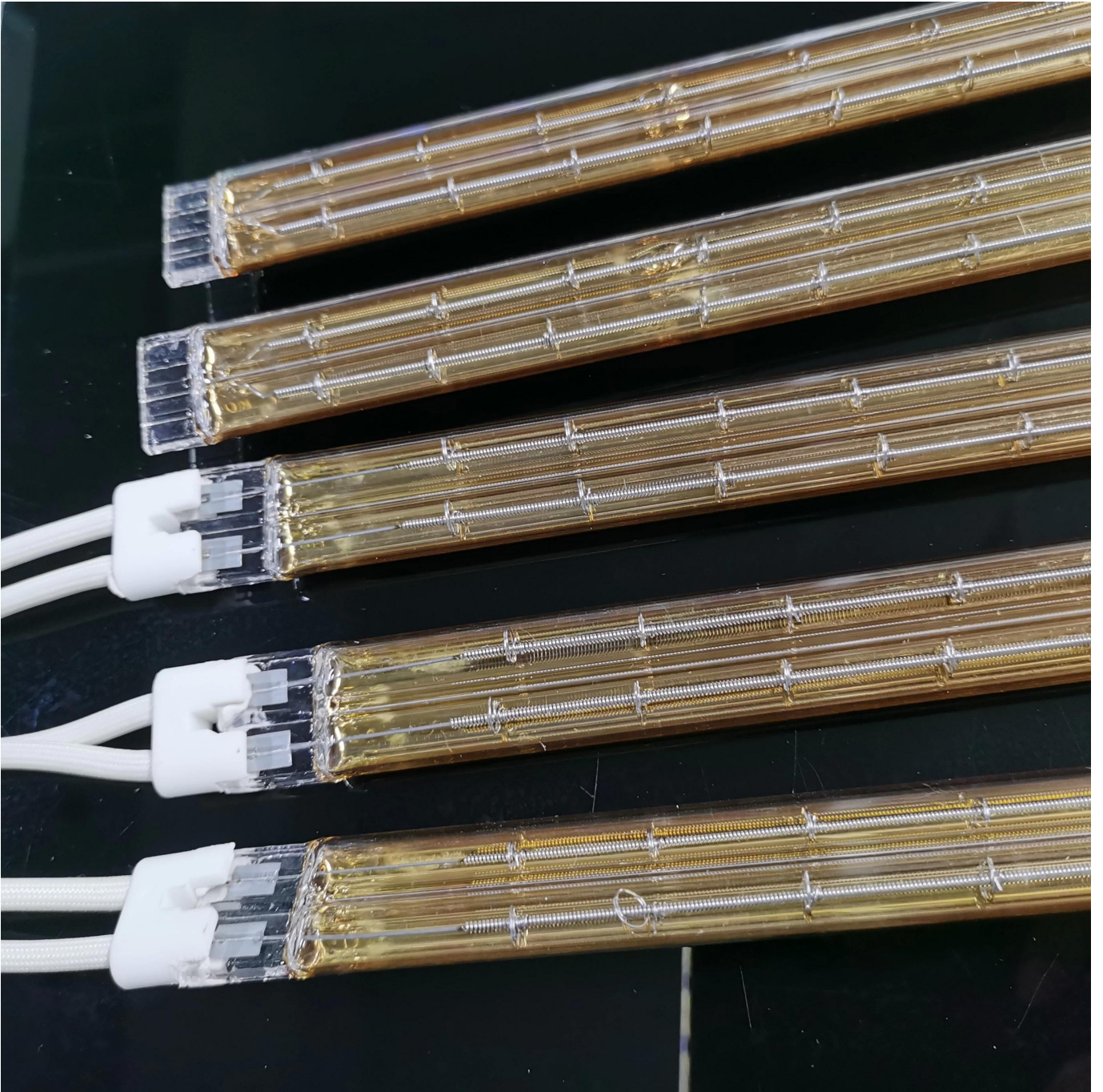
# 3000W 高功率工业级光纤耦合器

特点

采用 PTC 陶瓷，高功率，高稳定性



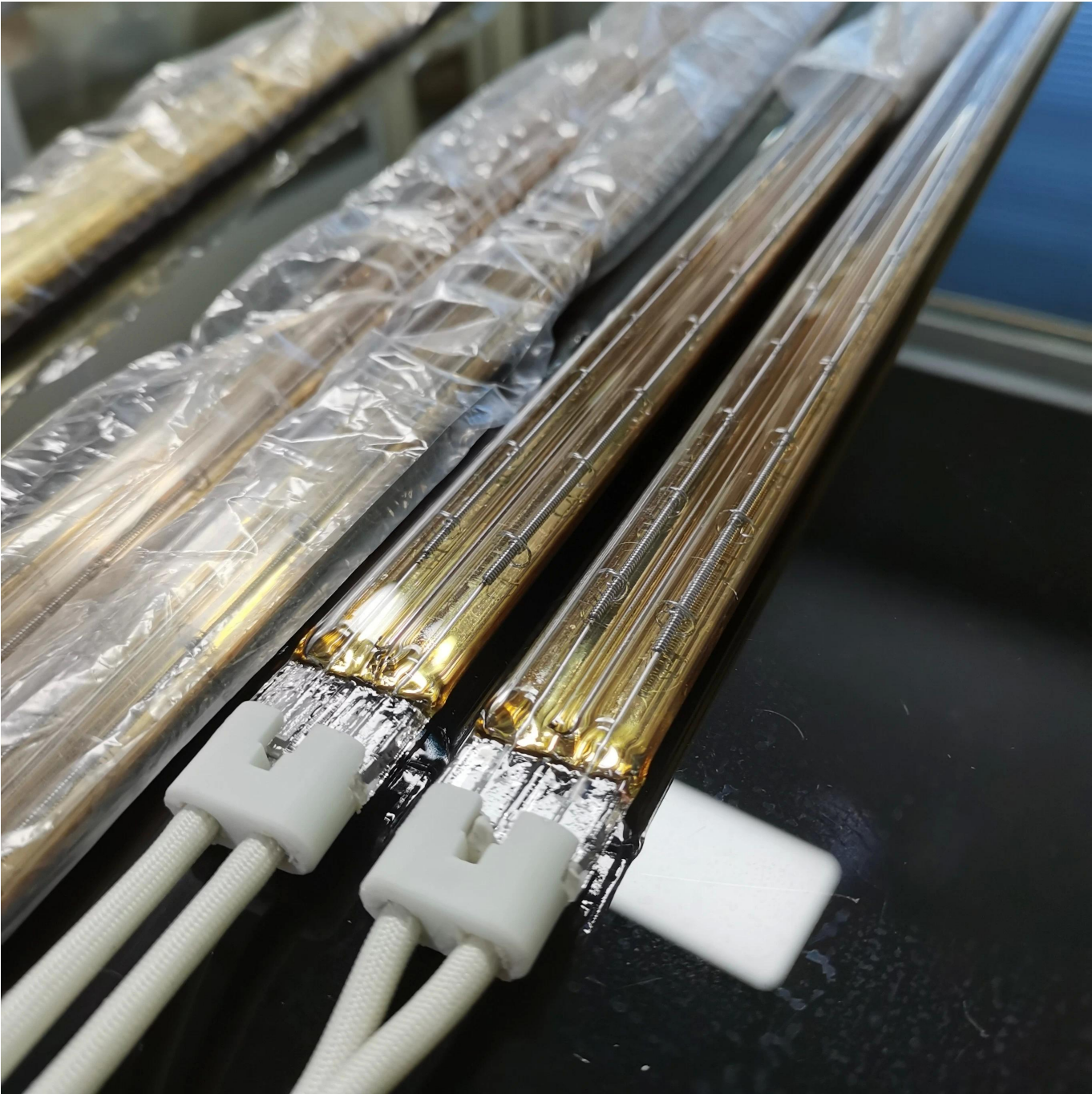




□□ :

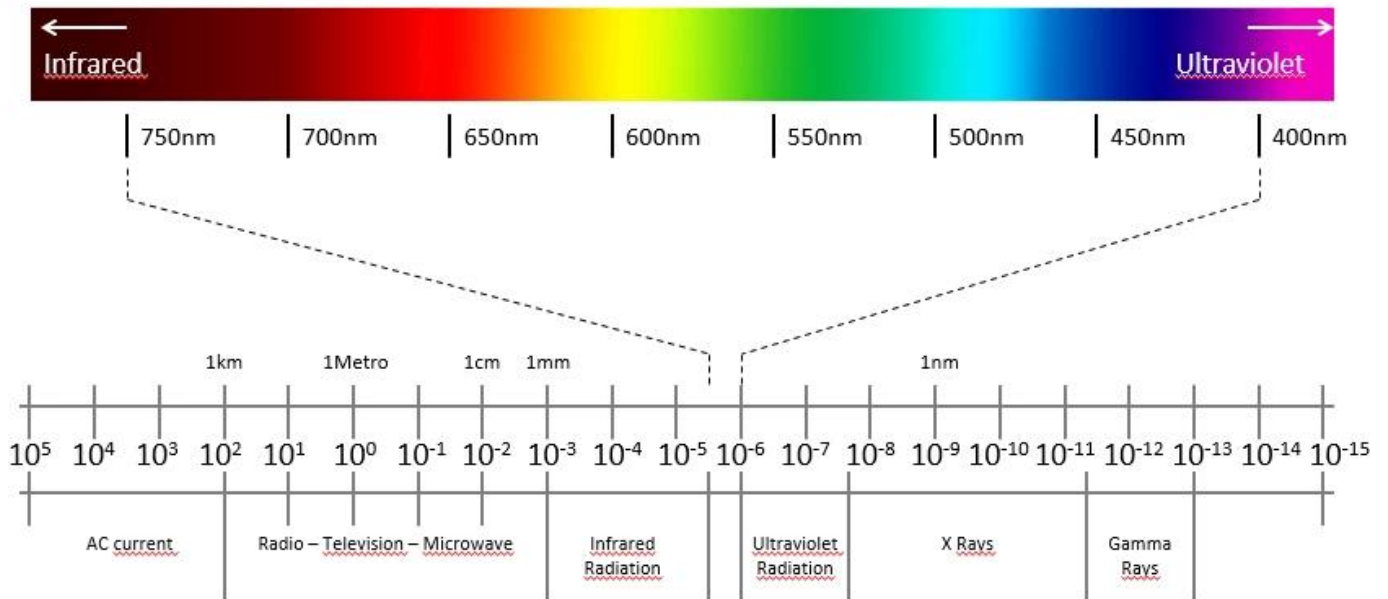
□□□□  
 □□□□□□  
 □□□□□□□□  
 □□□□□□□□  
 □□  
 □□□□(V)  
 □□□□□□□□

3000w□□□□ □□□SM52□□  
 5000□□  
 □□□□□□□□□□□□  
 5000□□  
 □□□□  
 415V  
 10000

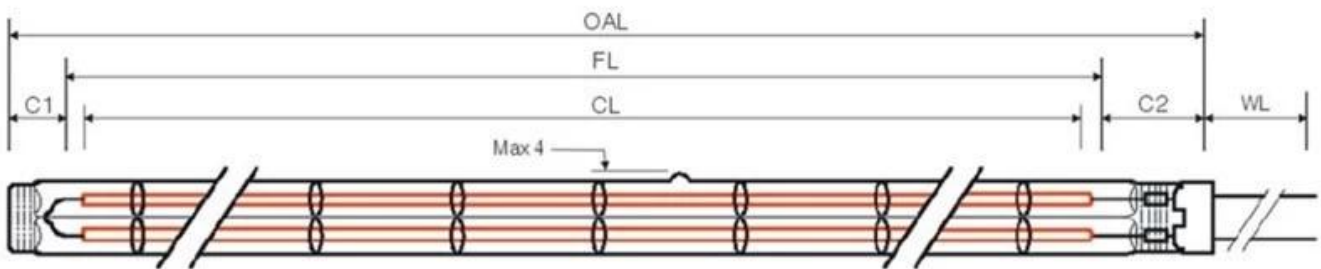




## Visible light spectrum



### 2. Dimensions Drawing:



- OAL: 740MM
- FL: 690 MM
- CL: 635 MM
- C1: 25MM
- C2: 40MM
- WL: 1000MM

### Ceramic Head Drawing:

A\*B: 23\*11mm



Shenzhen Newplanet Technology Co.,Ltd  
 (Shenzhen Suknun Technology Co.,Ltd)  
 0086-755-8939 9684(Direct) Fax: 0086-755-28995058  
 Email: irlightsales02@hotmail.com

Machine	Lamp Code	HD part	IR wave	Watt	OL(mm)	Volt (V)	Channel1 (W)	Channel 2 (W)	Line Head	Line 1	Line 2	Lamp Style	Use condition	Machine Details
SM52	SM52-SW-A	G4. 170. 0101	Short	3300	712/740	415	1650	1650	23*11	300	300	B	Horizontal	Grafix Heidelberg SM52
	HMO-SW-A	53. 170. 1311	Short	3300	740	415	1650	1650	23*11	500	500	B	Horizontal	Grafix Heidelberg M0
Heidelberg M	HMO-MW-B	53. 170. 1411	Medium	1800	740	415	900	900	33*15	500	500	B	Horizontal	Grafix Heidelberg M0
	SM72-SW-A	83. 170. 1311	Short	3500	800	415	1750	1750	33*15	500	500	B	Horizontal	Grafix Heidelberg 72
SM72	SM72-SW-B	83. 170. 1411	Medium	1900	800	415	950	950	33*15	500	500	B	Horizontal	Grafix Heidelberg 72
	SM102-SW-A	91. 170. 1311	Short	3500	1100	415	3500	0	23*11	500	500	A	Horizontal	Heidelberg SM102(Pre1997) Grafix part: 2130012
SM102-Pre97	SM102-MW-B	91. 170. 1411	Medium	2500	1100	415	1250	1250	33*15	1000	1000	B	Horizontal	Heidelberg SM102(Pre1997) Grafix part: 2130011
	SM74-SW-C	M6. 170. 0301	Short	6950	900	400	2800	2075*2	23*11	100	100	H	Horizontal	Drystar-Heidelberg SM74/CD74(Post1997)
CD74 SM74 MAN500	SM74-FMW-B		Fast-Medium	4200	820	480	2100	2100	33*15	500	500	B	Horizontal	Grafix Heidelberg SM74 POST 1997
	MANGX-FMW-B		Fast-Medium	4200	820	415	2100	2100	33*15	500	500	B	Horizontal	Grafix SHS Man Roland 500
	SM102-SW-C	C7. 170. 0301	Short	5400	1200	400	3500	950*2	23*11	100	100	H	Horizontal	Drystar
CD102 SM102	SM102-FMW-B B-3000		Fast-Medium	6000	1120	480	3000	3000	33*15	1000	1000	B	Horizontal	Grafix SHS Heidelberg 102 POST 1997
SM105XL	SM105XL-	F7. 170. 0771 C7. 170. 0716	Fast-Medium	6200	1160	400	3100	3100	33*15	500	500	B	Horizontal	Drystar 3000 Heidelberg SM102/CD102/SM102)Post2004)
907381	907381	6	Short	5400	1160	400	5400	0	33*15	130	130	A	Horizontal	907381
XL75	XL75	L7. 170. 0301	Short	3500	900	400	1750	1750	23*11	500	500	B	Horizontal	XL75

**Twin Lamp Structure:**

